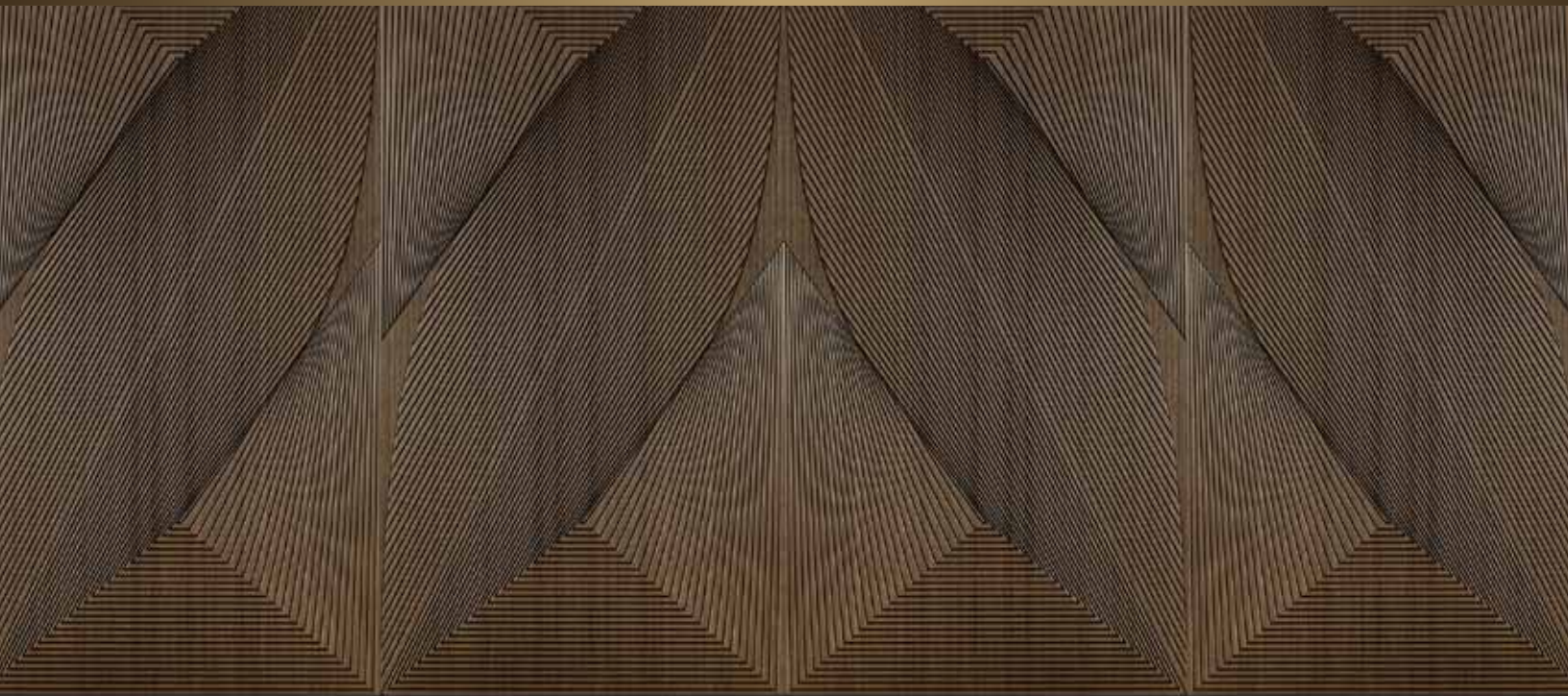




Pleat&Weave™ by Plyboo®

THE INTERPLAY OF LINE AND GRAIN

Where dynamic, sustainable bamboo surfaces meet the craftsmanship of textiles and fashion design, shaping spaces with artful precision and fluid sophistication.



DESIGNED BY KELSEY ANN KASOM – SMITH & FONG COMPANY, PLYBOO®



Pleat&Weave™ by Plyboo®

THE INTERPLAY OF LINE AND GRAIN

Fashion designer and sculptural textile artist **Kelsey Ann Kasom** explores the relationship between the body and its surrounding environments, grounded in an understanding of the material's innate potential. Her design philosophy is shaped by the interplay of **Pleat&Weave™**, an exploration that defines the possibilities within natural materials. Pleat reflects rhythm and repetition, while weave captures structure through the grain, creating a dynamic flow that transforms spaces.

In Kelsey's work with bamboo, the natural grain aligns harmoniously with the weave of the fabric, as both are shaped by a shared rhythm of repeating lines. The interaction of shadow and reflective light on **Plyboo RealCore®** bamboo enhances depth and dimension, much like how light moves across fabric. This connection reveals the truth that when guided by nature, both bamboo and fabric elevate the material by design to its highest potential.

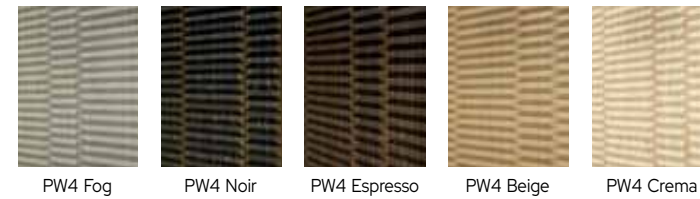
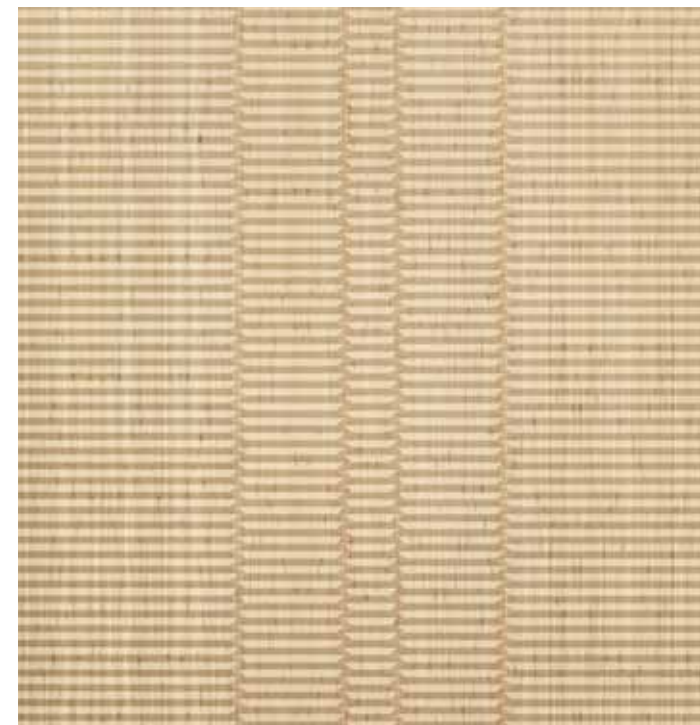
"I have deeply enjoyed my collaboration with the Plyboo® team.

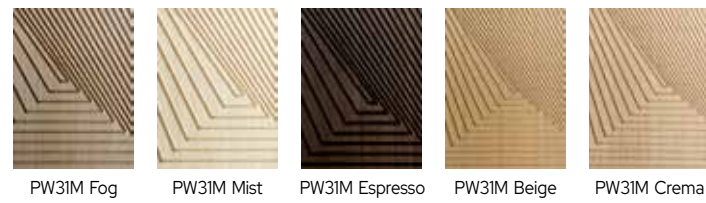
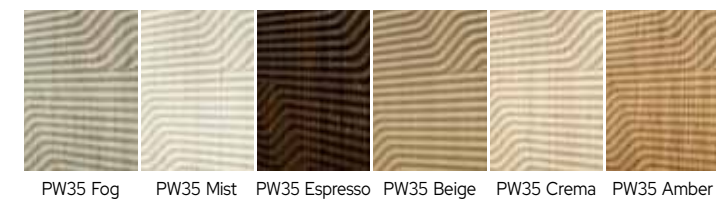
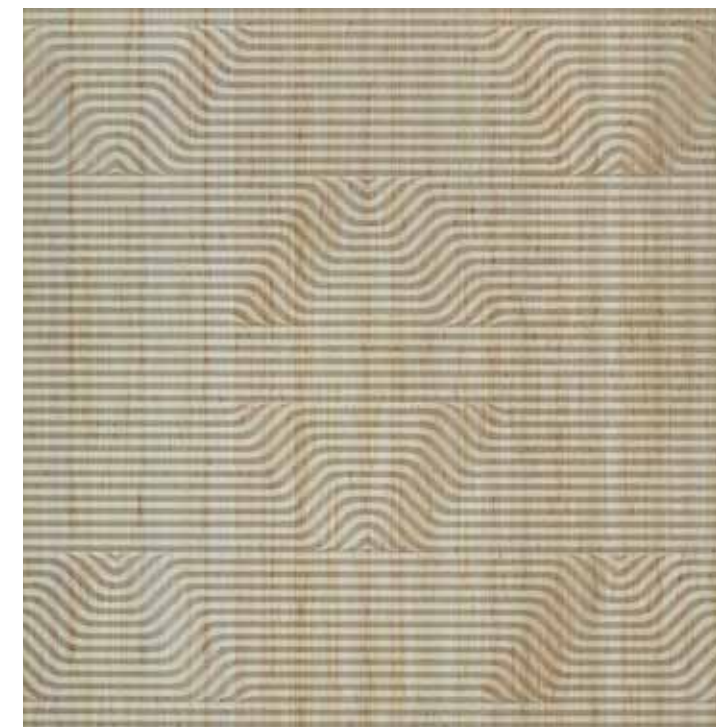
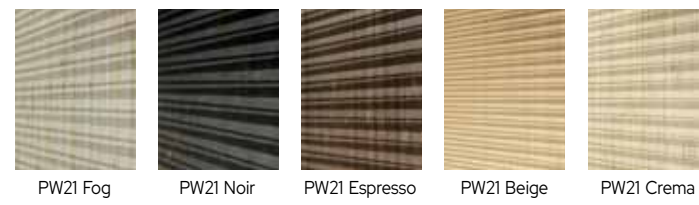
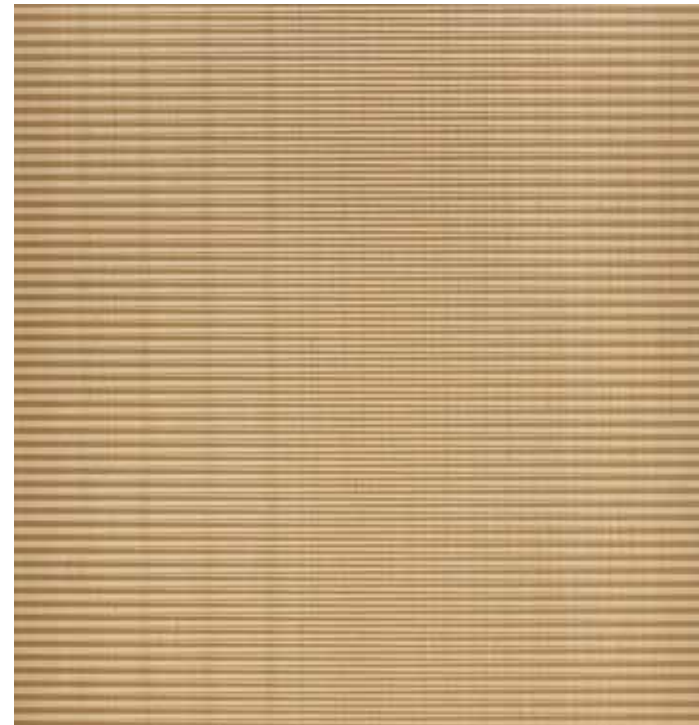
This body of work has allowed me to further explore the natural synergy between fabric and bamboo.

Together, we've crafted a collection that not only celebrates the organic beauty of bamboo but also redefines its potential, transforming spaces by creating forms that merge artistry with innovation, bringing my vision of fluidity and structure to life in ways that are both bold and enduring."

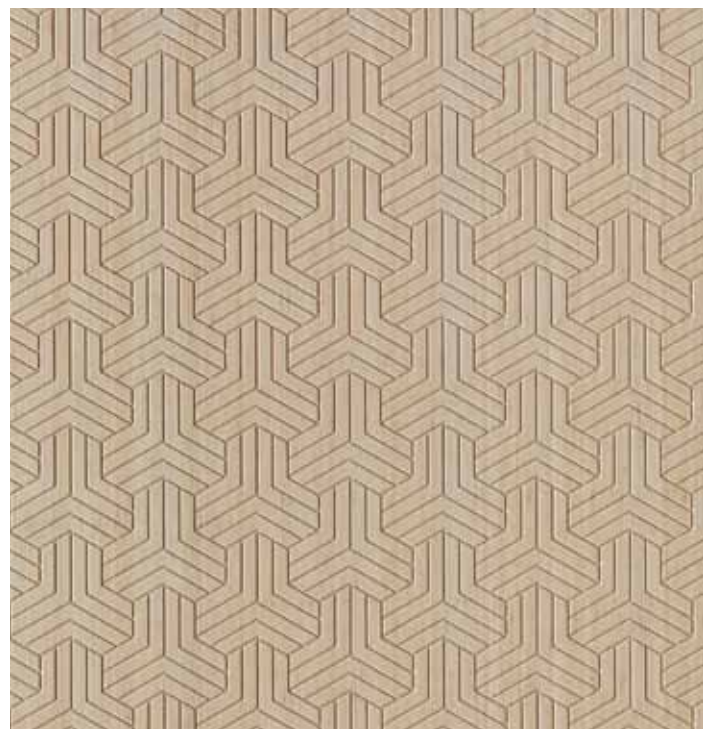
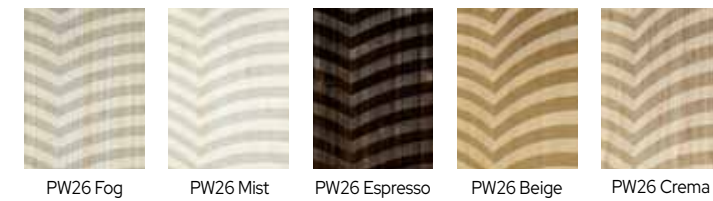
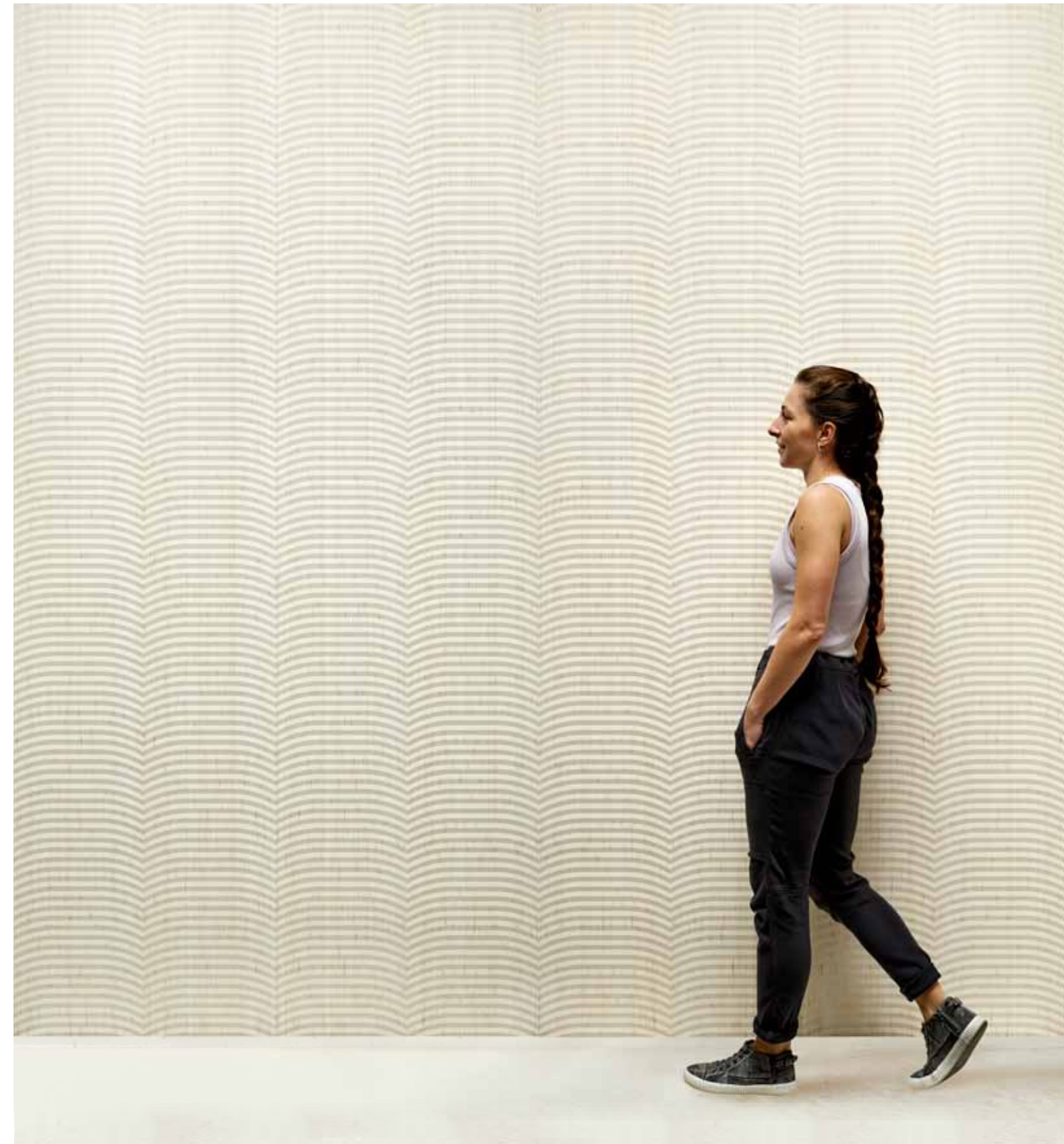
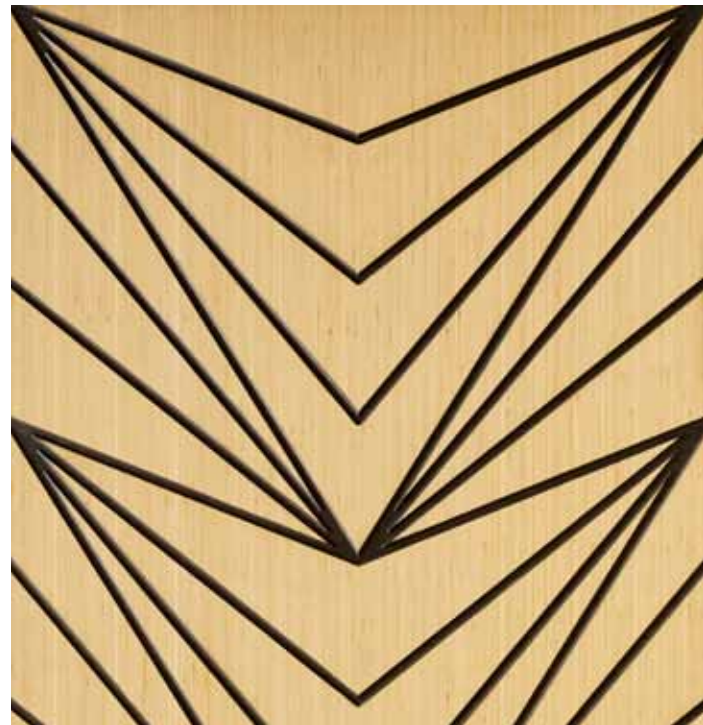
— Kelsey Ann Kasom, Materials Designer for Plyboo by Smith & Fong Company

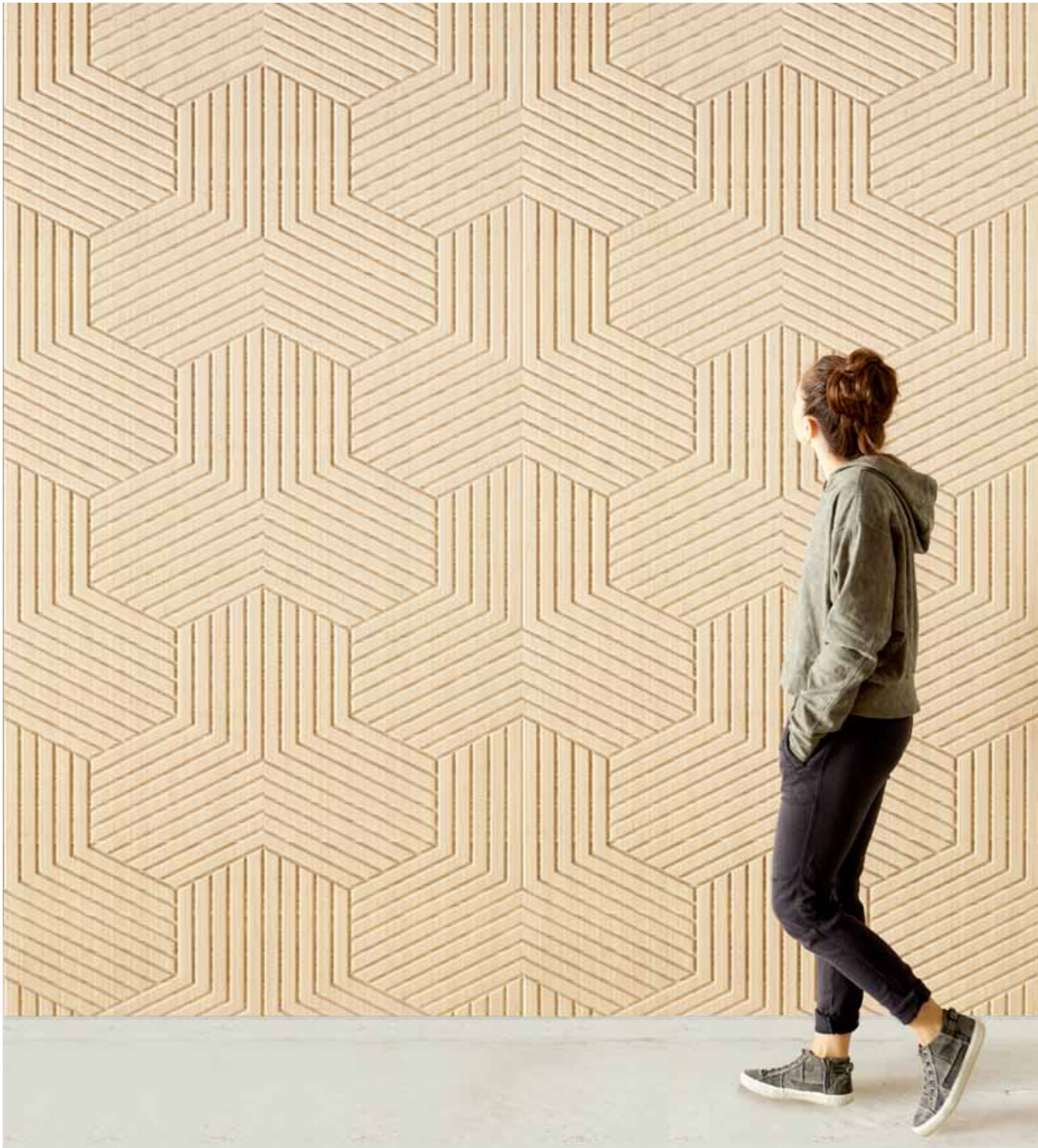












PW30_100 Fog

PW30_100 Noir

PW30_100 Espresso

PW30_100 Beige

PW30_100 Crema





Pleat&Weave™ by Plyboo®

THE INTERPLAY OF LINE AND GRAIN

Our Plyboo® collection transforms spaces with dynamic, sustainable bamboo surfaces inspired by the craftsmanship of textiles and fashion design.

Perfect for feature walls, larger installations, and design-forward projects, Pleat&Weave™ panels bring depth, texture, and sophistication—offering architects and designers a fresh, innovative approach to elevating any environment.



Pleat&Weave™ by Plyboo®

THE INTERPLAY OF LINE AND GRAIN

COLLECTION	Pleat&Weave™
MATERIAL	100% Bamboo (FSC Certified)
BASE/CORE COMPOSITION	Species: Moso bamboo (<i>Phyllostachys Pubescens</i>), RealCore™ Technology
ENVIRONMENTAL	LEED Credit Contributing, EPD, HPD, LCA, FSC
DIMENSIONS	¾" x 47 ¾" x 95 ¾" (19mm x 1213mm x 2432mm)
WEIGHT	80-90 lbs
SURFACE TEXTURE	Smooth or Carved
EDGE PROFILE	Straight Edge
COLLECTION COLORS	Amber, Beige, Crema, Espresso, Fog, French Noir, Mist, Noir, or custom by design
EMISSIONS TESTING	Section 01350 Protocol: No VOC's with chronic REL's (reference exposure level) detected, passes office, school and residential.
FLAME SPREAD	ASTM E84; Class C (Class B available)
PRODUCT DESIGN	Pleat&Weave™ Designed by Kelsey Ann Kasom , Manufactured by Smith & Fong Company

SMITH & FONG COMPANY

394 Bel Marin Keys Blvd. #6 | Novato, CA 94949
415-896-0577 | info@plyboo.com | www.plyboo.com